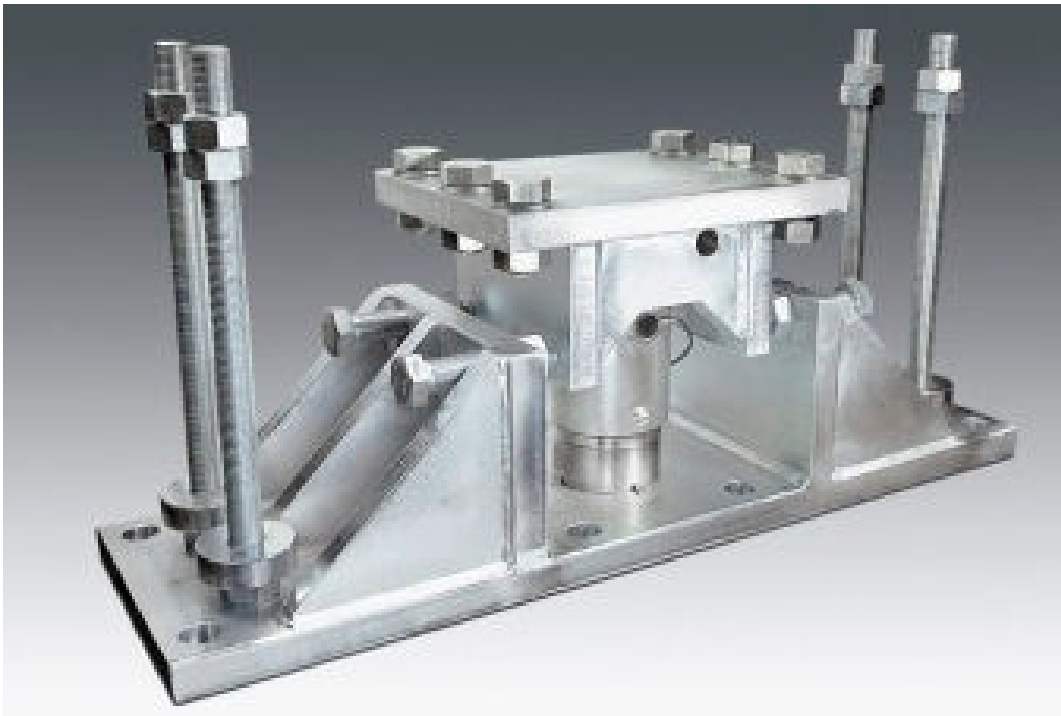


Reliable silo weighing in earthquake zones

Sartorius, Göttingen, Germany, has launched the Seismic Mount load cell mounting kit which has been specially designed to meet the extreme requirements of areas prone to earthquakes. It offers maximum security while at the same time allowing for tilting of the load cells caused by thermal or mechanical expansion or contraction of the silo or its support structure. In this way risk of error due to these movements is reduced and reliable weight readings are ensured. A load cell dummy provided with the kit enables fast and easy installation even without a load cell, as overload or welding currents commonly encountered during installation of silos might otherwise damage or destroy the cell. These mounting kits are completely maintenance free, being suitable for cells within the 20-520t capacity range. They have been designed to ensure maximum security, even when exposed to extreme horizontal and high lift-off forces. Currently employing some 4350 staff, Sartorius in 2009 reported sales revenues of 602 million euros. www.sartorius.com



Seismic Mount load cell mounting kit from Sartorius