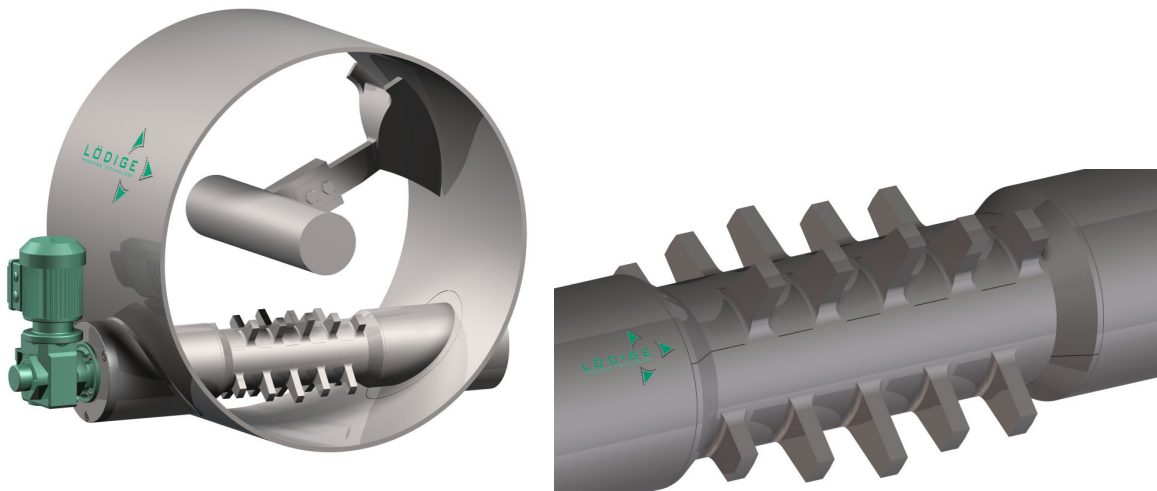


Mixer cutting system for products with tendency to bind or harden when reactants are added

Gebr. Lödige Maschinenbau, Paderborn, Germany, has developed a new cutting system fitted with blades for applications where there is a need to mix difficult-to-handle products. The device is positioned tangentially and at right-angles to the longitudinal axis of the mixer, through both sides of the mixing drum, and has two bearing points. This arrangement ensures a robust design which is capable of coping effectively with the most problematic materials, for which traditional choppers (one bearing at one end, installed in a radial manner through one side of the mixing drum from the outside) often prove ineffectual. The reason for this is that the product is guided by the mixing shovels towards the choppers and the resulting lateral forces impose such a strain that the seals and shafts of traditional choppers can become damaged, leading ultimately to total breakdown. The new blade cutting system from Lödige is suitable for use in batch and continuous mixers. It is also easy to service since cutting blades can be replaced without need to disconnect the shaft. www.loedige.de



Robust blade cutting system from Lödige prevents unwanted lump formation and (right) the blades in close-up