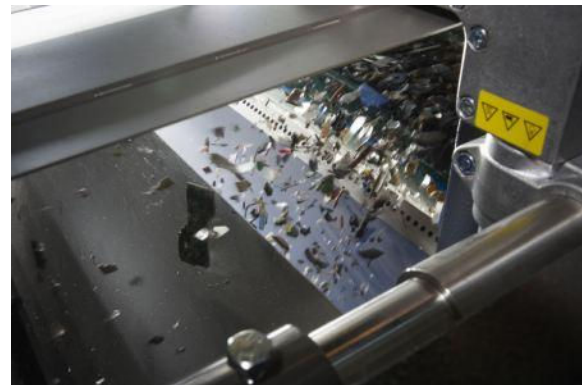
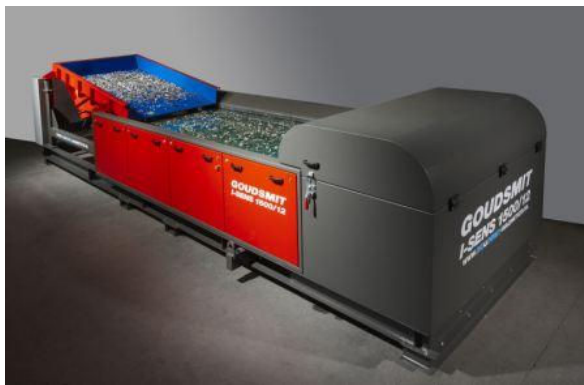


Sensor separators remove all metals from bulk material flows

Goudsmit Magnetic Systems, Waalre, the Netherlands, has recently developed the I-SENS sensor separator which works perfectly in association with an eddy current separator, being capable also of removing metals such as stainless steel, lead and copper wire that EC separators cannot remove. The separation principle employs a conveyor belt where an inductive sensor plate is mounted just before the end roll. This sensor plate will detect a metal particle as well as the line where the metal particle is on the belt. Next, the software will calculate the exact location, and the metal particle will be ejected from the flow with an air pulse in its free-falling curve and dumped behind the separation partition. Sensor sensitivity can be adjusted to achieve the desired results. The I-SENS is designed for use in various recyclable product flows such as WEEE (waste electrical & electronic equipment), incinerator slag, refuse, wood and car shredder residue. www.goudsmit-magnetics.nl



I-SENS from Goudsmit Magnetic Systems and (right) stainless steel and non-ferrous metal particles being ejected